



Viterbo University 1 credit option—\$200 (tuition and fees). If you will be attending the conference for credit, please register for the Viterbo event on www.MyQuickReg.com. You will receive the 2012 Viterbo course registration form via email in March. Please bring your completed Viterbo course registration form and \$200 payment (check or credit card) when you check-in.

DO NOT MAIL YOUR PAYMENT DIRECTLY TO VITERBO.

This credit applies toward DPI license renewal and salary lane adjustments in most districts. At the conference, you will receive a materials packet. You are required to write a 1-2 paragraph summary of each session.

You MUST attend BOTH Monday and Tuesday to earn Viterbo credit.

ASHA Certification Maintenance Hours (CMH)*

Participants will receive a certificate that is accepted as documentation of attendance for the ASHA Certification Maintenance professional development requirement—30 hrs/3 yrs.

Mon & Tues: 11 Hrs, Mon: 5 Hrs, Tues: 6 Hrs

*Note: Those attending the pre-conference session will receive an additional certificate for 2.5 hours.

New Requirement for SLPs who hold the state DSPS License (formerly the WI Dept. of Regulatory Licensure):

By January 2013, SLPs and Audiologists must have two hours of Continuing Education in the area of Ethics. We are pleased to respond to this need by providing one CEU hour at the 2012 CESA 5 Speech-Language Institute. More information is to come!

This Institute addresses the following Wisconsin Department of Public Instruction PI34 Teaching Standards:

- Teacher Standards 3, 4, 6, 7, 8**
- Pupil Service Standards 3, 6**
- Administrator Standards 3, 5**
- SPP Indicators 1, 3, 5**

All participants will receive a PI34 compliant certificate of attendance at the conclusion of the conference.

We strongly encourage and appreciate early registrations.

Cancellation Policy:

Registered participants will receive a full refund if they cancel at least 10 working days before the conference. Because of our commitments to the Kalahari Convention Center, presenters, vendors, and participants, no refund of any kind, for any reason, will be given for cancellation requests received after Monday, February 20, 2012. CESA 5 cannot make exceptions to this policy.

Any lodging cancellations are the responsibility of the conference participant and not subject to any type of refund by CESA 5.

Registrations are transferable within your organization. If the registered participant is unable to attend, a substitute participant may attend in his/her place. Please notify Andrea Schneider under this scenario to ensure appropriate registration materials are provided by CESA 5.

CESA 5 Will NOT Cancel the Conference Due to Inclement Weather.

Kalahari Information



Rooms are available at the Kalahari at the single state rate of \$70; double, triple or quad rate of \$119. Free waterpark pass to each registered guest. Kalahari has waived the advance payment policy for this conference. Call (877) 253-5466 for reservations. **State rates only apply for reservations until lodging block is filled, or until February 4, 2012.**

Directions to Kalahari, Wis. Dells:

190-94 to Exit 92, go north on Hwy 12, turn right on Meadowview Drive, turn right to Kalahari Drive.

View directions and a map to Kalahari:

www.kalahariresorts.com/wi/information/directions/

View a floor plan of the conference area:

www.kalahariresorts.com/wi/conventions/

REGISTRATION INFORMATION

**10th Annual CESA 5 SLP Institute
Sunday - Tuesday, March 4-6, 2012
Kalahari Resort, Wisconsin Dells**

Professional

Sunday: \$100/each session

Each pre-conference session on Sunday limited to 30

Mon & Tues: \$240

Mon or Tues: \$150

Full Time Student/Parent

Sunday \$100; M & T \$150; M or T \$100

Registrations accepted through 2/29/2012

Register early - seating limited to 500

**Online Registration Only ...
Log on to www.MyQuickReg.com**

Please Join Us...

...for the Speaker "Meet & Greet,"
Vendor Showcase and
Alumni Networking Reception
on
Monday from 4:00 - 5:30 p.m.
in the Vendor Hall

•If you need special dietary considerations or other accommodations, please indicate them at the time of registration on www.MyQuickReg.com

•To insure a quality learning environment, children will not be allowed in the session hall during presentations.

•Contact: Andrea Schneider, CESA 5, PO Box 564, Portage, WI 53901. Phone: 608-742-8814, Ext. 293, Fax: 608-742-2384 Email: schneitera@cesa5.org

Please share this flyer with those involved with autism, EC, CD, OT and others who may be interested!

Agenda

Sunday, March 4, 2012

★ **Pre-Conference Sessions (Judi Cumley, CESA 5):**
Participants must also attend SLP Institute. Each session limited to 30.

- 12:30- 3:00 Introduction to the iPad/iPod Touch
- 4:00- 6:30 Communication Apps for iPad/iPod Touch
- 4:00- 7:00 Early Registration

Monday, March 5, 2012

- 7:30- 8:30 Registration & Light Breakfast
- 8:30- 8:40 Welcome from Don Stevens, CESA 5
- 8:40-10:00 Michael McSheehan
- 10:00-10:30 BREAK
- 10:30-12:00 Michael McSheehan
- 12:00- 1:00 LUNCH (provided)
- 1:00- 2:30 Alexandra Dunn-SMART Inclusion
- 2:30- 3:00 BREAK and VENDOR INTRODUCTIONS
- 3:00- 4:00 Alexandra Dunn-SMART Inclusion
- 4:00- 5:30 Speaker "Meet & Greet," Vendor Showcase, Alumni Networking Reception

Tuesday, March 6, 2012

- 7:30- 8:00 Registration & Light Breakfast
- 8:00-10:00 Barbara Williams Hodson-Phonological and Metaphonological Skills of Children with Highly Unintelligible Speech: An Update (PART I)
- 10:00-10:30 BREAK
- 10:30-12:00 Barbara Williams Hodson-PART II
- 12:00- 1:00 LUNCH (provided)
- 1:00- 2:00 Barbara Williams Hodson-PART III
- 2:00- 2:30 BREAK
- 2:30- 3:30 Blaise Winter-The Power of Mind and Body
- 3:30- 3:45 GRAND PRIZE Drawings & Wrap-Up

CESA 5 Website:
www.cesa5.k12.wi.us/departments/sped_staffdevel.cfm

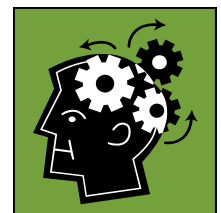
Visit our NEW Conference Website:
<https://sites.google.com/a/cesa5.org/slpinstitute/>

Visit us on **Facebook:** CesaFive Slp

**10th Annual
CESA 5 School-Based
Speech-Language
Pathology Institute**

March 4-6, 2012

**Kalahari Resort & Convention Center
Wisconsin Dells, WI**



- **Augmentative Communication and Inclusive Education: Fostering Membership, Participation, and Learning**
- **SMART Inclusion = SMARTboards + Assistive Technology + Critical Pedagogy**
- **Enhancing Phonological and Metaphonological Skills of Children with Highly Unintelligible Speech: An Update**
- **The Power of Mind and Body**

Pre-Conference Sessions on Sunday:

- Introduction to the iPad/iPod Touch
- Communication Apps for iPad/iPod Touch

FEATURED PRESENTERS:

- Michael McSheehan**, Clinical Professor & Project Coordinator, University of New Hampshire, Durham, NH
- Alexandra Dunn**, M.C.I.Sc., SLP
Upper Canada District School Board, Oxford Mills, Ontario
- Barbara Williams Hodson**, PhD, CCC-SLP
Wichita State University, Wichita, KS
- Blaise Winter**, Motivational Speaker & National Football League Veteran, Appleton, WI

Viterbo graduate credit available



CESA 5
Cooperative Educational Service Agency 5
626 East Slinger Street
PO Box 564
Portage, WI 53901-0564

★ **Pre-Conference Sessions** ★
Seating Limited to 30 Each Session
Must also attend SLP Institute

Facilitator: Judi Cumley, Assistive Technology Consultant, CESA 5/WATI

Introduction to the iPad/iPod Touch
Sunday, March 4, 2012
12:30 - 3:00 pm

Learn how iPod/iPad technology can be used to help support students with disabilities in the educational setting. Bring your own device to this hands-on workshop to learn how to download, organize, delete and otherwise manage apps, adjust accessibility settings, review accessories and so much more. You will have the opportunity to explore iTunes to find apps that are relevant to your students. Participants will see examples of free and paid apps for AAC, articulation, language skills, social skills, literacy and more. A limited number of iPads and iPod Touch devices will be available for loan. Please contact Judi Cumley at cumleyj@cesa5.org if you need to reserve a device. All participants should have an iTunes account and password established if they want to download any apps.

Communication Apps for iPad/iPod Touch
Sunday, March 4, 2012
4:00 - 6:30 pm

There are literally hundreds of speech and language apps on the iTunes store ranging from AAC to articulation, language and concept development and more. We will explore and compare SOME of the apps that Speech and Language Pathologists may find useful including those that you may not consider "typical" apps for speech or language development. Resource lists of apps will be provided, but please be prepared to share your own favorites. While we may spend a limited time reviewing new features in IOS 5, this session is intended for those who are familiar with iDevices, accessibility and operating features.



Judi Cumley has worked as the Assistive Technology Consultant for CESA 5/WATI (Wisconsin Assistive Technology Initiative) since 1995. She previously taught in Wisconsin, Nebraska and California as a special education teacher. Judi provides Assistive Technology training and consultation for the 35 districts included in CESA 5. She has also presented at local, regional, state and national conferences. She is the author of the WATI ASNAT (Assessing Student's Needs for Assistive Technology) Reading Chapter and co-author of the WATI ASNAT Communication Chapter. www.wati.org

TUESDAY (continued):
Enhancing Phonological and Metaphonological Skills of Children with Highly Unintelligible Speech: An Update



Barbara Williams Hodson, PhD, CCC-SLP, has published two phonology tests (one in Spanish), a computer software program, and three books, the most recent being *Evaluating and Enhancing Children's Phonological Systems: Research and Theory to Practice*. In addition, she has published a number of research articles in scholarly national and international journals as well as numerous chapters in textbooks. Hodson also has given several hundred Clinical Phonology presentations nationally and internationally. Her major professional goal has been to develop more effective assessment and remediation procedures for children with highly unintelligible speech.

Prior to joining the faculty at Wichita State University, Hodson taught at San Diego State University and the University of Illinois (the institution where she received her PhD). Her major recent recognitions include: the American Speech-Language-Hearing Foundation's Frank R. Kleffner Lifetime Clinical Career Award (2004), the Wichita State University Excellence in Research Award (2008), and the highest award of the profession, ASHA Honors (2009). <http://webs.wichita.edu/?u=csd&p=/faculty/hodson>

TUESDAY (2:30 - 3:30 pm):
The Power of Mind and Body



Blaise Winter, Motivational Speaker & National Football League (NFL) Veteran, is living proof of the Power of Mind and Body. Born with a cleft lip and palate, he underwent many surgeries and long hours of speech therapy. Tumors removed in each ear resulted in deafness in one ear. Mistakenly placed in a class for mentally retarded children, Mr. Winter rejected feelings of self-doubt and low self-esteem, finding acceptance through sports.

Mr. Winter again proved the experts wrong by being named the MVP of Syracuse University in 1983. Not only was he drafted into the NFL, but he went on to play 11 years of professional football. Mr. Winter's habit of beating the odds led him to discover a new purpose in life as a motivational/inspirational speaker. He is determined to strengthen the core of mankind by teaching people to believe in themselves, to destroy obstacles and to become relentless in the pursuit of their dreams. www.blaisewinter.com

MONDAY (8:40 am - 12:00 pm):
Augmentative Communication and Inclusive Education: Fostering Membership, Participation, and Learning

8:40-10:00 am: Part I
10:30 am-12:00 pm: Part II

A new vision is emerging for students with complex communication needs: When provided with appropriate instruction and supports, students with disabilities can learn grade-level academic knowledge and skills and can communicate in ways that are commensurate with their same-age peers without disabilities. Using video examples of students across the country and research findings from 30 years, this session will describe practical ways educators can collaborate to support this new vision. The session will highlight augmentative communication strategies to promote membership and participation in general education classrooms and learning of general education curriculum by students with significant cognitive disabilities.



Michael McSheehan is a Clinical Assistant Professor of Communication Sciences and Disorders at the University of New Hampshire and a Project Director with the National Center for Inclusive Education at the Institute on Disability/UCED. He has worked on a variety of state and national initiatives to advance research, policy, and practice in inclusive education, alternate assessment, augmentative and alternative communication (AAC), autism spectrum disorders, collaborative teaming, and Response to Intervention (RtI). Michael was a developer, researcher, and author of The Beyond Access Model, which has been used successfully by schools across the U.S. to promote membership in general education classrooms, participation in general education instruction, and learning of general education curriculum by students with significant disabilities (including those who use AAC). He is currently working on two books based on his collaboration with public schools to address school improvement and students with complex support needs. <http://www.iod.unh.edu/Home.aspx>

MONDAY (1:00 - 4:00 pm):
SMART Inclusion = SMARTboards + Assistive Technology + Critical Pedagogy

1:00 - 2:30 pm: Part I
3:00 - 4:00 pm: Part II

Meaningful integration of students with disabilities, particularly in large/small group instruction, still poses challenges to educators. This presentation highlights a SMART Inclusion initiative utilizing the frameworks of universal design for learning, differentiated instruction, aided language stimulation and the participation model to guide use of assistive technology with interactive whiteboards in group instruction.

MONDAY (continued)

Demonstration of the technology, video examples of classroom application, and outcomes relating to both teacher training and student achievement will be shared.



Alexandra Dunn, M.Cl.Sc., SLP, is a registered speech-language pathologist currently working with the Upper Canada District School Board in Oxford Mills, Ontario. Upon her 1996 graduation from the Masters of Clinical Science (Speech-Language Pathology) program at the University of Western Ontario, Ms. Dunn began her career at the Muskoka region at Trillium Lakelands of District School Board. It was there that Ms. Dunn, in collaboration with the team from Bloo-view MacMillan Centre, implemented programming for students requiring augmentative and/or alternative means of communication (AAC) using the Participation Model. Since that time, she remains passionate and committed to improving the lives of the students she serves and to the parents and school staff dedicated to making "the impossible possible" for ALL students. Recognizing the fundamental importance of inclusion and participation of all children in the classroom, Ms. Dunn initiated a pilot project at the Upper Canada District School Board called "SMART Inclusion." The UCDSB SMART Inclusion pilot has generated a great deal of discussion and excitement locally, nationally, and internationally. She has had the opportunity to present in Canada, Italy, England and the United States. <http://smartinclusion.wikispaces.com>

TUESDAY (8:00 am - 2:00 pm):
Enhancing Phonological and Metaphonological Skills of Children with Highly Unintelligible Speech: An Update

8:00 - 10:00 am: Part I
10:30 am - 12:00 pm: Part II
1:00 - 2:00 pm: Part III

This session focuses on children with severely impaired phonological systems, including those with the label, Childhood Apraxia of Speech. Information about methods for expediting intelligibility gains is presented in the first two parts, including identification of patterns of phonological deviations, selection of optimal target patterns, and specific information regarding treatment. Because children with highly unintelligible speech frequently experience difficulties in the domain of early literacy, information about assessing and enhancing metaphonological skills is explained in the third part. Assessment results and outcome data for a preschool client and also video clips are provided in the last parts to exemplify evidence-based practices.

Thanks to our outstanding sponsors!



On-Site Vendors



Come and see The Cognitive Press's speech and language resources...for all ages! A product selection designed especially for you including Attainment Company's AAC tools, products for elementary and older students, Barbara Hodson's products, and iPad apps.



Kids' Express Train - Speech and language stimulation through music, imitation and fun.



Visit our booth to view our complete line of AAC devices including ECO2, ECOpoint, Vantage Lite, and SpringBoard Lite and see how we combine ease of programming with the advantage of the Unity language.



Stuttering Foundation provides resources, services and support to those who stutter and their families as well as support for research into the causes of stuttering. Provides training and information to professionals and is a valuable resource for SLPs working with children of all ages.



Super Duper Publications creates fun learning materials for kids with special needs.



Tobii is a premier developer of hardware and software for people with physical, cognitive and speech disabilities.

Bring your authorized purchase orders!



Conference Information Available At:
CESA 5 Website:
www.cesa5.k12.wi.us/departments/sped_stafflevel.cfm
Visit our NEW Conference Website:
<https://sites.google.com/a/cesa5.org/slpinstitute/>
Also, don't forget to add us as a friend on Facebook: CesaFive Slp